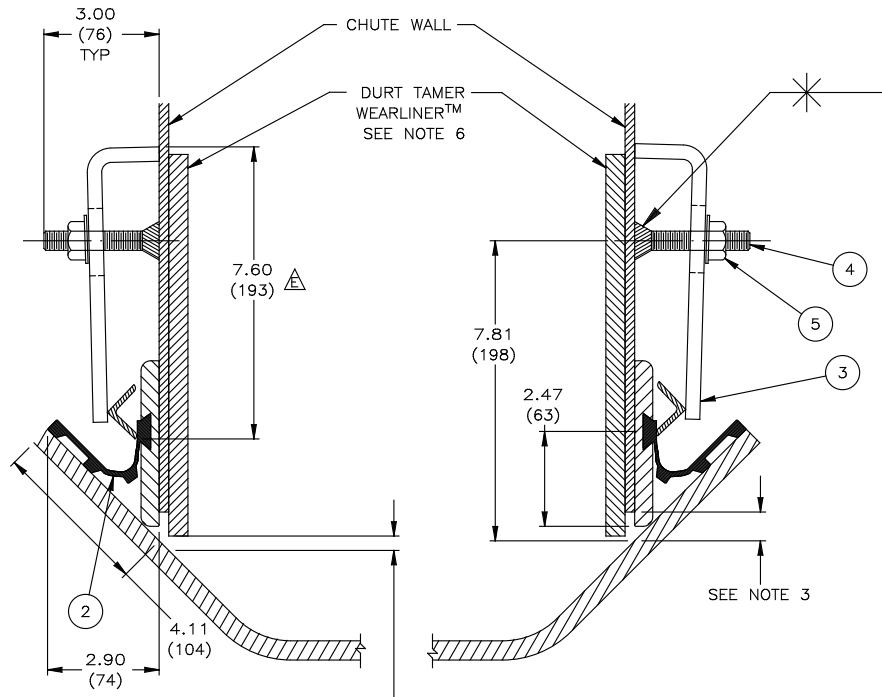
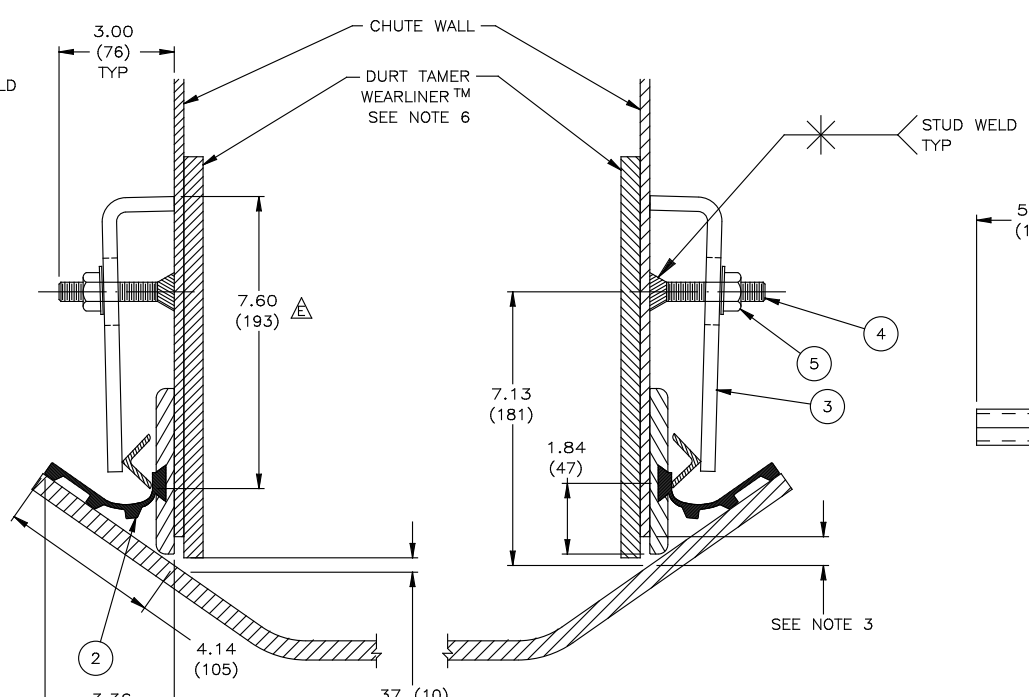


ITEM	QTY.	DESCRIPTION	PART NUMBER
1	12	APRON SEAL™ 3.00 ASSEMBLY	32048-123
2	12	APRON SEAL™ 5.00 ASSEMBLY	32048-125
3	1	ANGLE CLAMP WELDMENT	32049
4	*	STUD THREADED 1/2-13NC X 3	31189
5	**	NUT FLANGE LOCKING 1/2-13NC	18843

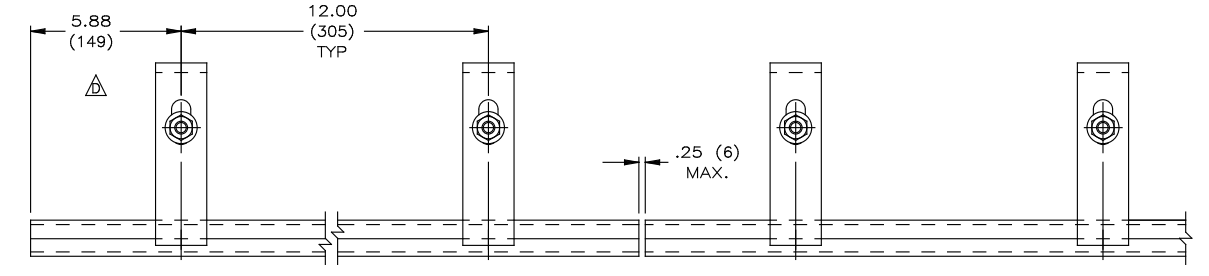
* - USE 1 PER EACH FOOT OF APRON SEAL™ SKIRTING
 ** - 2 OF 18843 ARE SUPPLIED PER FOOT, 1 IS USED TO HOLD THE ANGLE CLAMP IN PLACE ON THE STUD, THE OTHER CAN BE WELDED TO THE CHUTE WALL AND THEN INSERT THE STUD.
 B.O.M. SHOWS COMPONENTS USED IN APRON SEAL™ INSTALLATIONS.



.37 (10) IN IMPACT AREA. TAPER TO .75 (19) AT EXIT AREA.
45° BELT



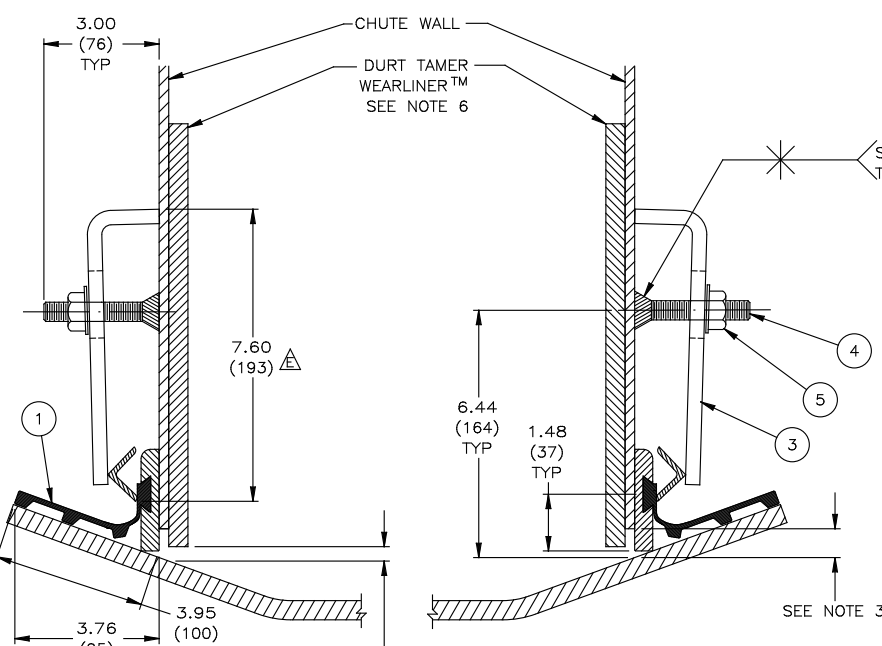
.37 (10) IN IMPACT AREA. TAPER TO .75 (19) AT EXIT AREA.
35° BELT



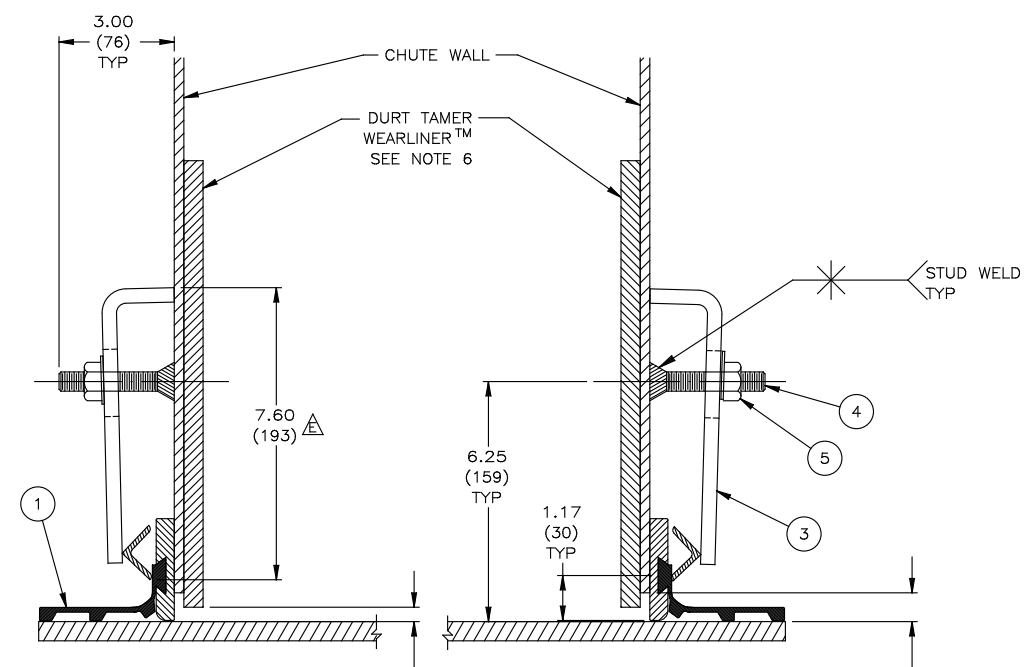
ANGLE CLAMP WELDMENT DETAIL
 SCALE: 1/4

- NOTES:
- 1) ALL DIMENSIONS ARE GIVEN IN INCHES (MM).
 - 2) ALL DIMENSIONS ARE SHOWN FOR REFERENCE PURPOSES ONLY.
 - 3) MARTIN RECOMMENDS CHUTE WALL BEING WITHIN .75"(19) OF BELT.
 - 4) SKIRTING CAN BE ADJUSTED INDIVIDUALLY PER CLAMP TO MEET VARIATIONS IN BELT PROFILE.
 - 5) A MIN. 10"(254) VERTICAL AND 4"(102) HORIZONTAL CLEARANCE REQUIRED TO INSTALL SKIRTING AND CLAMPS.
 - 6) TO PROVIDE AN EFFECTIVE SEAL, WEARLINERS™ ARE TO BE USED TO PREVENT THE MAIN LOAD FROM CONTACTING THE SKIRTING.
 - 7) WHEN WEARLINERS™ ARE BOLTED TO CHUTE WALL, SKIRTING AND CLAMPS ARE TO BE MOUNTED IN A MANNER AS TO ALLOW EASY ACCESS TO BOLTS.
 - 8) MARTIN APRON SEAL™ SKIRTING IS DESIGNED AS A DUST SEAL. IT IS NOT DESIGNED AS A MATERIAL HOLDBACK OR LOAD CARRYING SURFACE.
 - 9) CONVEYOR BELT MUST NOT LIFT OFF IDLERS DURING STARTUP OR WHILE BELT IS RUNNING.
 - 10) BELT MUST TRACK PROPERLY TO PREVENT BELT FROM RUNNING BEHIND SKIRTING.
 - 11) FOR INSTALLATIONS WITH UNUSUAL OR SEVERE CONDITIONS: I.E. CONCAVE/CONVEX CURVES, EXTREME SIDE PRESSURE, EXTREMELY FAST OR SLOW BELTS, TEMPERATURE EXTREMES, CORROSIVE ATMOSPHERES, ETC., CONSULT MARTIN ENGINEERING
 - 12) SKIRTING AND WEARLINER™ SHOULD BEGIN AT LEAST 12"(305) PRIOR TO INLET SIDE OF TRANSFER CHUTE WALL.
 - 13) ANY DEVIATION IN MOUNTING, OTHER THAN SHOWN, CUSTOMER SHOULD CONSULT MARTIN ENGINEERING.
 - 14) CLAMP IS TO BE FULLY TIGHTENED AGAINST CHUTE WALL.
 - 15) CLAMP MUST HAVE FIRM BACKING TO INSURE PROPER CLAMP FORCE.

NOTE: REFER TO OPERATORS MANUAL DURING INSTALLATION.
 THIS IS NOT A SUBSTITUTE FOR OPERATORS MANUAL.



.37 (10) IN IMPACT AREA. TAPER TO .75 (19) AT EXIT AREA.
20° BELT



.37 (10) IN IMPACT AREA. TAPER TO .75 (19) AT EXIT AREA.
FLAT BELT

© Copyright 1996 Martin Engineering. All rights reserved. Covered by U.S. and foreign patents pending and issued. ® and ™ indicate trademarks of Martin Engineering.

MARTIN ENGINEERING NEPONSET ILLINOIS USA

NO.	DESCRIPTION	ECN	DATE	BY	SALES DRAWING	TITLE	DATE	DRWN	CHECKED	ENG.	JLD	APPROVED	JRB	DATE	SCALE	
E	CHANGED DIMENSION FROM 7.50 TO 7.60 (4 PLACES)/UPDATED P/N 32049 PICTORIALLY DUE TO CHANGE	9929	05/02/01	CGH		INSTALLATION DRAWING FOR ANGLE CLAMP WITH APRON SEAL™ SKIRTING SYSTEM	01/10/96	CAH						05/10/01	3/8	
D	CHGD DIM F/4.00 TO 5.88	8225	01/22/97	SRS												
C	RDRN RMVD P/NS 32048-12R 33544-124 29080-02 102118 & INST INSTRUCT ADDED 35° 20° VIEWS		01/10/96	CAH												

REVISION SUPERCEDES C-SIZE DATED 07/26/90

L:\SAL\S32045

S32045

SCALE 3/8